

兔抗 TGFB2 多克隆抗体

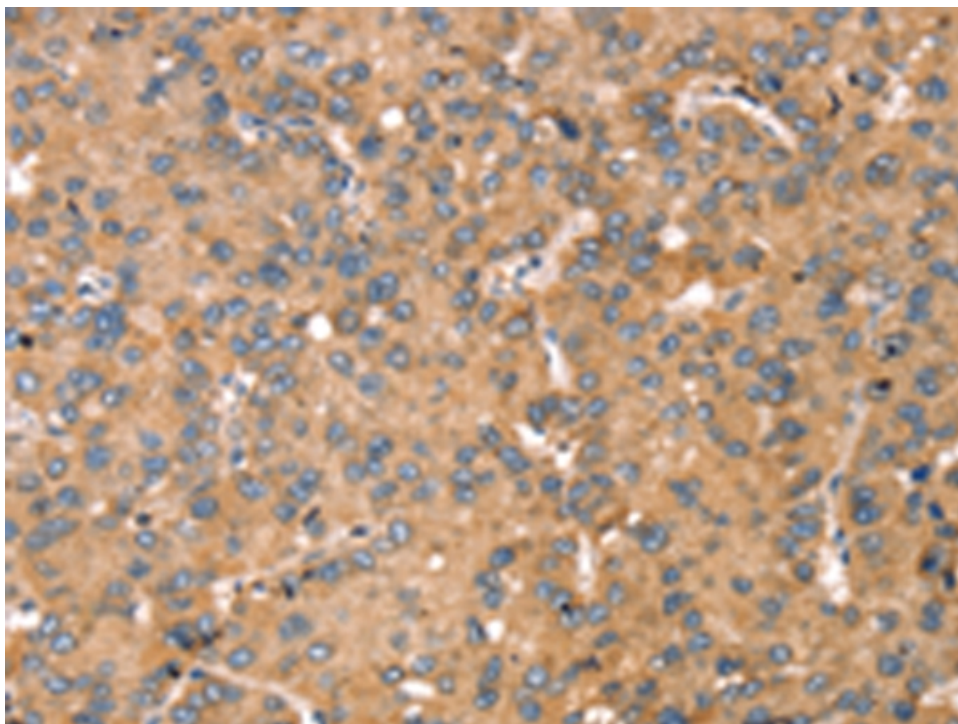
- 中文名称：兔抗 TGFB2 多克隆抗体
- 英文名称：Anti-TGFB2 rabbit polyclonal antibody
- 别名：LDS4; TGF-beta2
- 相关类别：一抗
- 储存：冷冻（-20℃）
- 宿主：Rabbit
- 抗原：TGFB2
- 反应种属：Human, Mouse, Rat
- 标记物：Unconjugate
- 克隆类型：rabbit polyclonal

技术规格

Background:

This gene encodes a member of the transforming growth factor beta (TGFB) family of cytokines, which are multifunctional peptides that regulate proliferation, differentiation, adhesion, migration, and other functions in many cell types by transducing their signal through combinations of transmembrane type I and type II receptors (TGFBR1 and TGFBR2) and their downstream effectors, the SMAD proteins. Disruption of the TGFB/SMAD pathway has been implicated in a variety of human cancers. The encoded protein is secreted and has

	<p>suppressive effects of interleukin-2 dependent T-cell growth. Translocation t(1;7)(q41;p21) between this gene and HDAC9 is associated with Peters' anomaly, a congenital defect of the anterior chamber of the eye. The knockout mice lacking this gene show perinatal mortality and a wide range of developmental, including cardiac, defects. Alternatively spliced transcript variants encoding different isoforms have been identified.</p>
Applications:	ELISA, IHC
Name of antibody:	TGFB2
Immunogen:	Synthetic peptide of human TGFB2
Full name:	transforming growth factor, beta 2
Synonyms :	LDS4; TGF-beta2
SwissProt:	P61812
ELISA Recommended dilution:	2000-5000
IHC positive control:	Human liver cancer and Human lung cancer
IHC Recommend dilution:	25-100



mlbio 梅联生物
Good elisakit producers