

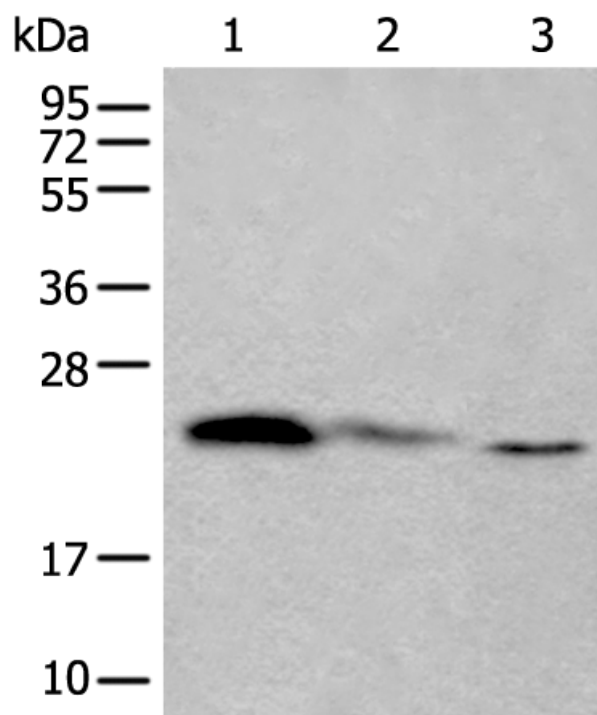
## 兔抗 TPT1 多克隆抗体

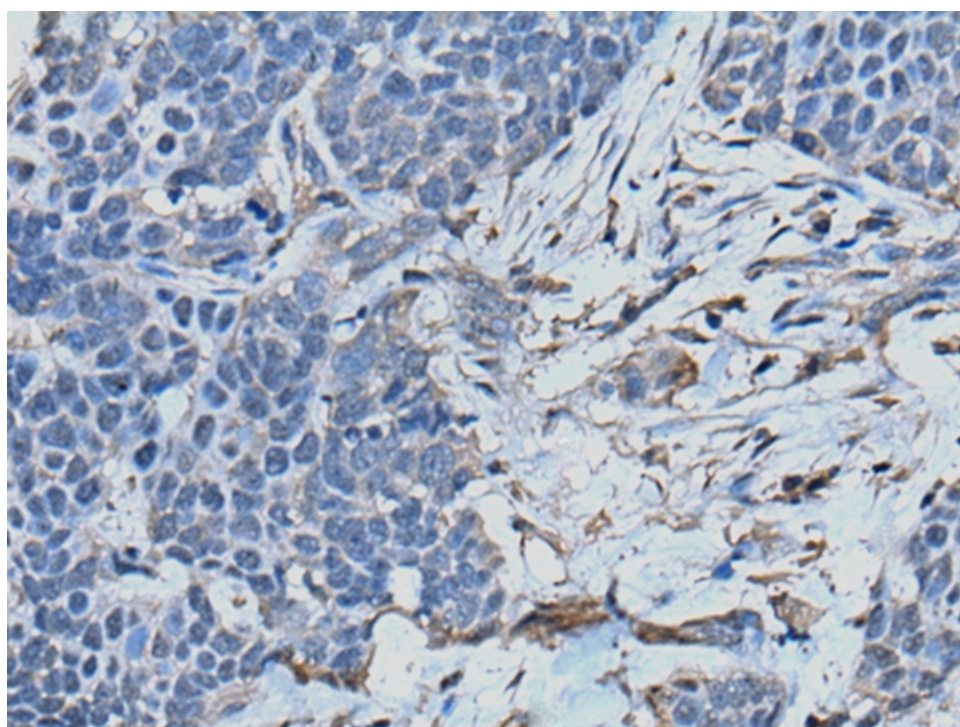
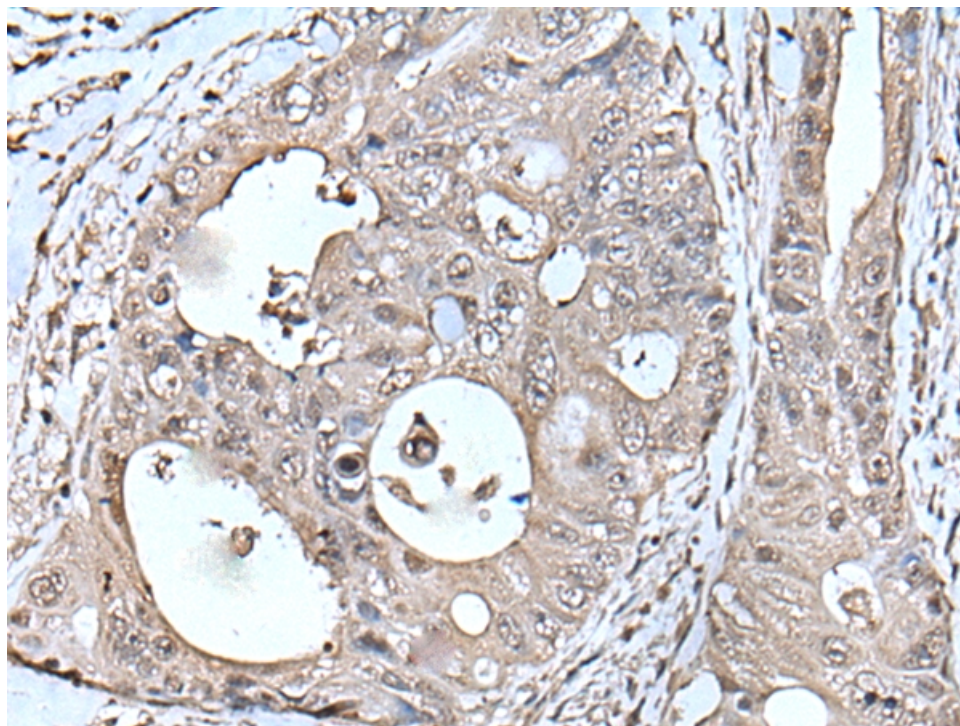
中文名称:	兔抗 TPT1 多克隆抗体
英文名称:	Anti-TPT1 rabbit polyclonal antibody
别名:	HRF; p02; p23; TCTP
抗原:	TPT1
宿主:	Rabbit
储存:	冷冻 (-20℃)
反应种属:	Human, Mouse, Rat
相关类别:	一抗
标记物:	Unconjugate
克隆类型:	rabbit polyclonal

### 技术规格

<b>Background:</b>	Involved in calcium binding and microtubule stabilization.
<b>Applications:</b>	ELISA, WB, IHC
<b>Name of antibody:</b>	TPT1
<b>Immunogen:</b>	Full length fusion protein
<b>Full name:</b>	tumor protein, translationally-controlled 1
<b>Synonyms:</b>	HRF; p02; p23; TCTP
<b>SwissProt:</b>	P13693
<b>ELISA Recommended dilution:</b>	5000-10000
<b>IHC positive control:</b>	Human thyroid cancer and human colorectal cancer
<b>IHC Recommend dilution:</b>	30-150

<b>WB Predicted band size:</b>	20 kDa
<b>WB Positive control:</b>	Jurkat,293T and Hela cell lysates
<b>WB Recommended dilution:</b>	500-2000





**mlbio** 梅联生物  
Good elisakit producers